



16TA-00002

Concrete Octagon Top, with 3 Seats, ADA  
(Wheelchair Accessible)

**General Specifications:**

Manufacturing

All precast work shall be true to dimensions and have clean, accurate arrises and details faithfully executed. Reinforcing steel shall conform to ASTM 615 for rebar, and deformations shall conform to ASTM-M-0305. All precast shall have a minimum compressive strength of 5,000 psi at 28 days of age when tested by means of 6 x 12 cylinder molds from the materials. There shall be a maximum of 4-6% air entertainment for all precast according to ASTM standards.

Reinforcement

All concrete products have reinforcement characteristics such as rebar or fiberglass.

Molds

The forms for the precast units shall be constructed of metal or fiberglass, and designed to withstand casting pressures without distortion. All anchors, inserts, bolts, etc., will be placed and secured in the forms as required for the attachment and handling of the units. These shall be clamped or secured so as to hold them in position during the fabrication.

Physical Characteristics

All exposed surfaces are treated to remove the surface matrix and expose the aggregate produced by chemical retardant - not sand blasting. All precast shall have water-repellant sealer treatment applied in strict accordance with manufacturer's specifications. All tolerances shall be within 1/8" of specified dimensions, designed for structural analysis and calculation.

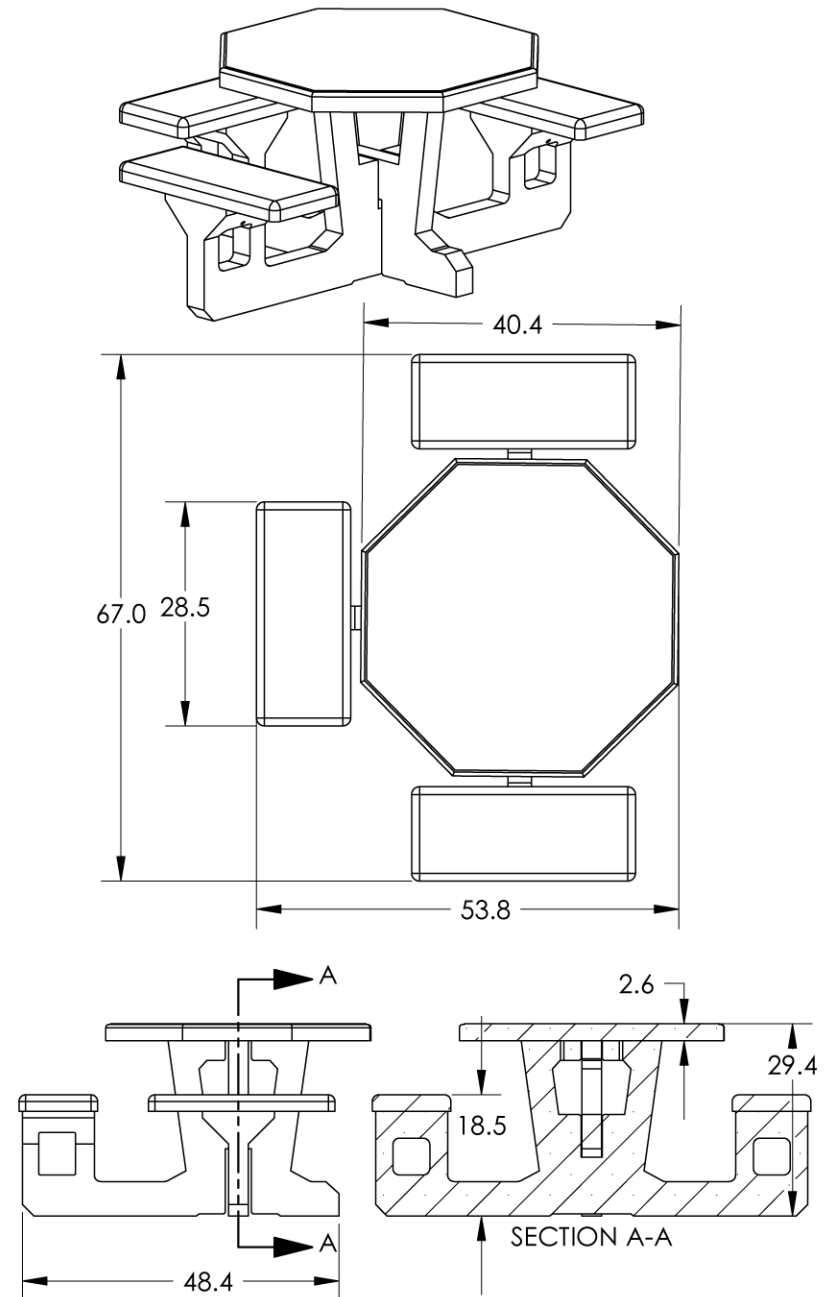
Color

Color to be uniform throughout as approved by owner or specified in accordance with manufacturer's recommendation.

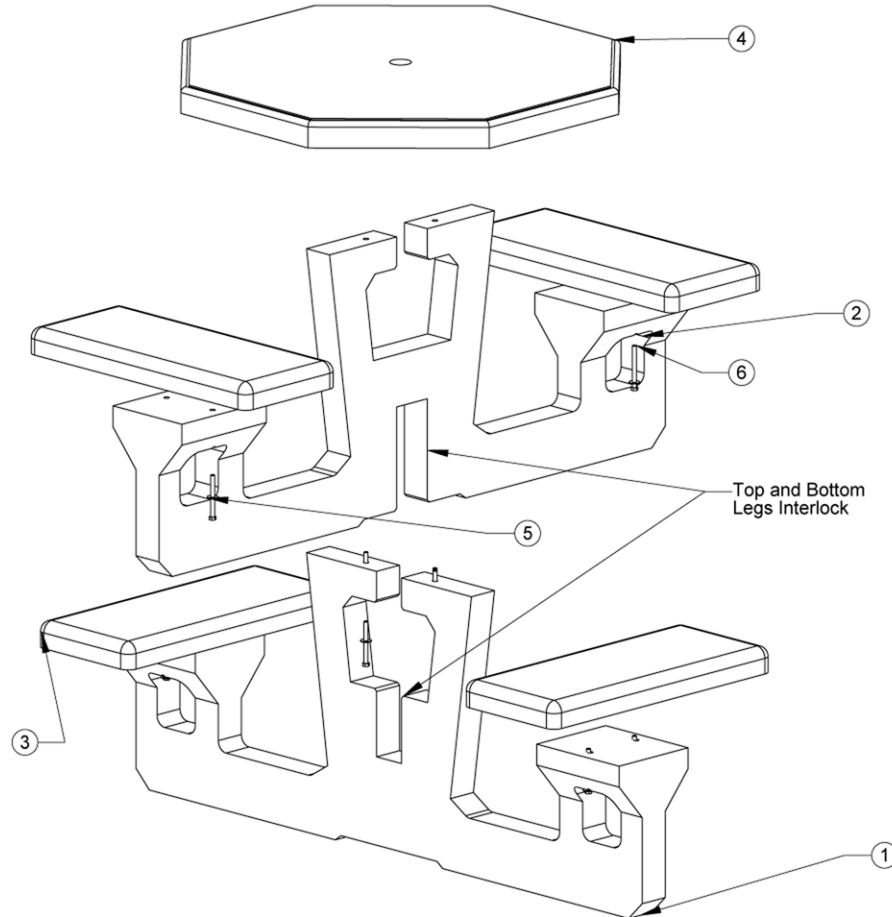
Materials

Portland Cement: ASTM C 150 Type I or III

All aggregate to meet ASTM C 33 Specifications



ITEM NO.	PART NUMBER	DESCRIPTION	Checker Board /QTY.
1	OTS Leg	OTS Leg Bottom	1
2	OTS Leg Top	OTS Leg Top	1
3	OTS Seat	CONCRETE,OTS-ST SEAT	4
4	Octagon Top	OTS Concrete Table Top	1
5	3/8 Flat Washer	3/8" USS flatwasher, plated	12
6	3/8-16x4 Hex Bolt	3/8x4" Gr 2 plated bolt	12



**For assembly:**  
 Set bottom Leg (Self Standing)  
 Set top leg over bottom leg  
 Set the seats on the flat parts of the legs  
 Install 4" bolts and washers through  
 legs into seat inserts (2 per seat)  
 Tighten bolts snugly (DO NOT OVER TIGHTEN)  
 Set table top on legs lining up the inserts  
 of the top with the holes in the legs  
 Assemble 4" bolts and washers through the holes  
 of the table top into inserts in the legs  
 (Be Very Careful Not To Overtighten Bolts)  
 Tables should be unassembled before moving

