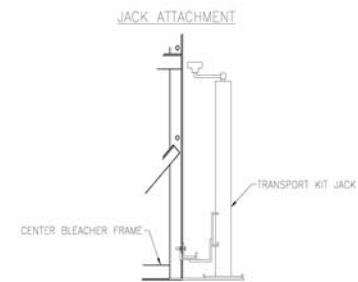
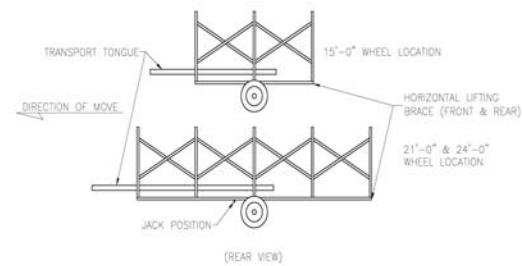
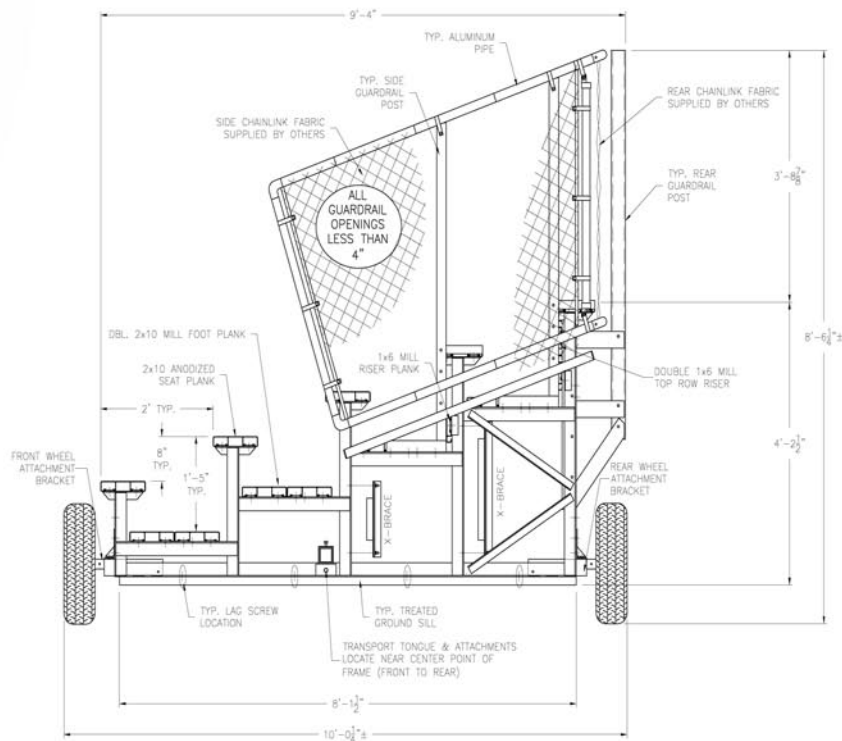




51BH-215

5 Row with Chainlink Guardrails, Length 15', Seats
50, Transport Kit NOT Included



PLACE JACK ON UNDER SIDE OF HORIZONTAL BRACE APPROX. 14"-18" AWAY FROM CENTER FRAME, AS SHOWN. BLEACHER SHOULD ALWAYS BE ON SOLID, LEVEL GROUND, AND BE STABILIZED TO PREVENT MOVEMENT WHEN USING JACK.

NOTE: ILLUSTRATION SHOWN WITH DOUBLE FOOT PLANK, RISER (ROWS 4 & 5), & CHAINLINK GUARDRAIL. PLEASE REFER TO ATTACHED SPECIFICATIONS FOR FEATURES INCLUDED WITH YOUR SPECIFIC BLEACHER.