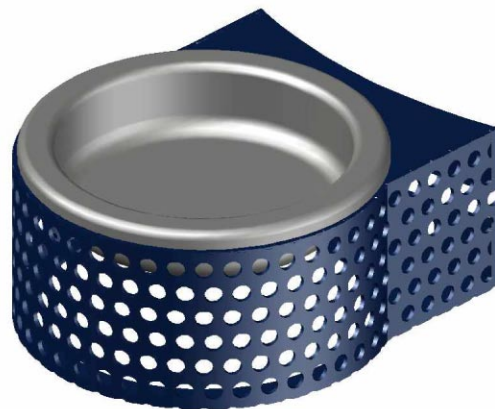
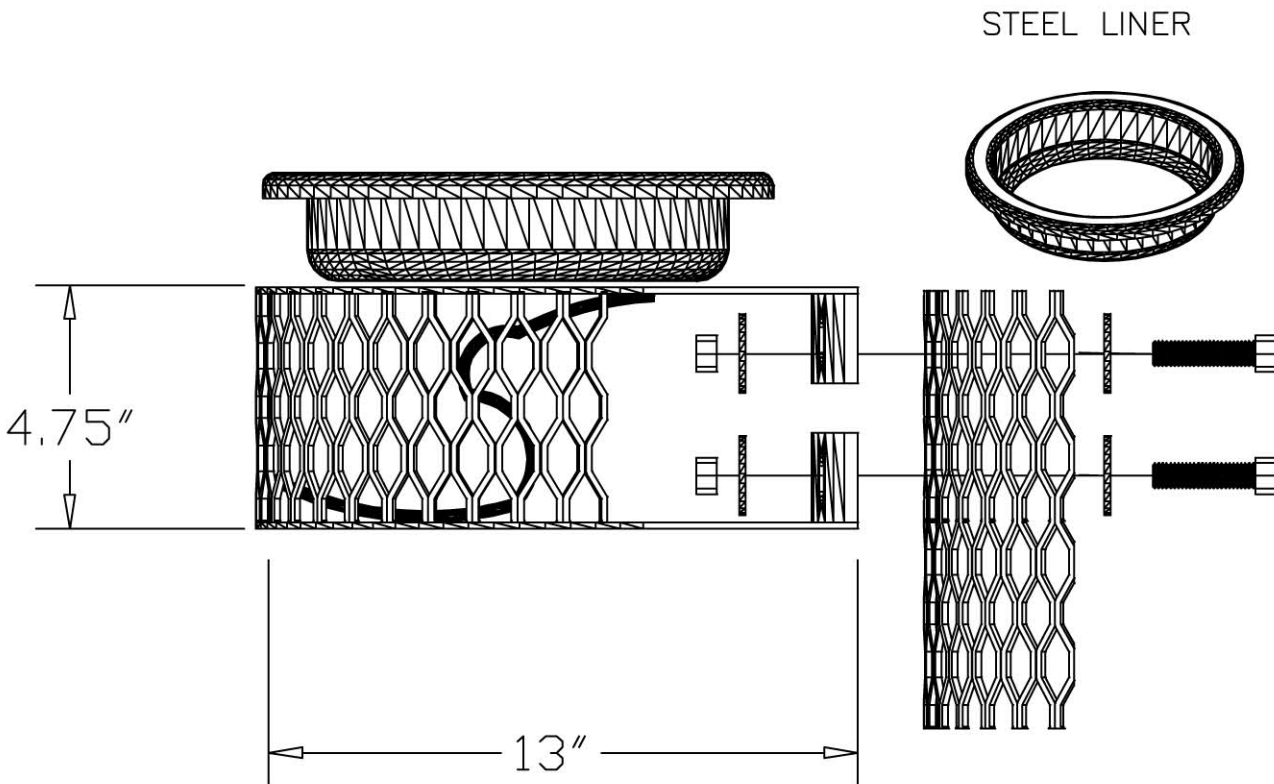




**11AU-020**  
**Perforated Ash Urn Assembly**  
**with Stainless Steel Tray**



**Please take the time to located and identify each part. Assemble the units on a smooth, flat surface. It is also helpful to lay the tops and seats on cardboard or a drop cloth to prevent scratching of the surface during assembly. All parts have been pre-cut and pre-drilled for ease of assembly. All holes are slotted to allow for easy assembly and for fine leveling of tops and seats to frames. Fully assemble all parts without totally tightening nuts and bolts. After all pieces are assembled, go back and realign nuts and bolts. DO NOT OVER-TIGHTEN NUTS TO BOLTS. Over-tightened nuts can crack the plastisol coating. All the necessary quantities of parts required are listed in the assembly instructions.**



## Specifications and Maintenance

13" X 4 3/4" POLY VINYL PUNCHED STEEL ASHURN WITH A CHROME PLATED STEEL PAN.

COATED WITH A 1/8" TO 1/4" THICK PLASTISOL ULTRAVIOLET STABILIZED VINYL COATING FUSED AND BAKED TO A 90% GLOSS.

TOTAL OVERALL DIMENSIONS ARE 13" X 4 3/4". APPROX.

ASHURN IS MADE FROM 11 GA. 1/2" HOLE PRECISION PUNCHED STEEL WITH 1/4" FLAT STEEL FOR THE TOP AND BOTTOM.

ON TOP IS A CHROME PLATED STEEL PAN SECURED WITH A CHAIN FOR EASE OF EMPTYING.

ALL HARDWARE IS NON-CORROSIVE.  
WEIGHT IS 10 LBS.

**To maintain luster it is recommended to wash, rinse, and dry the units after prolonged use. Check for loose bolts and nuts and tighten as needed.**