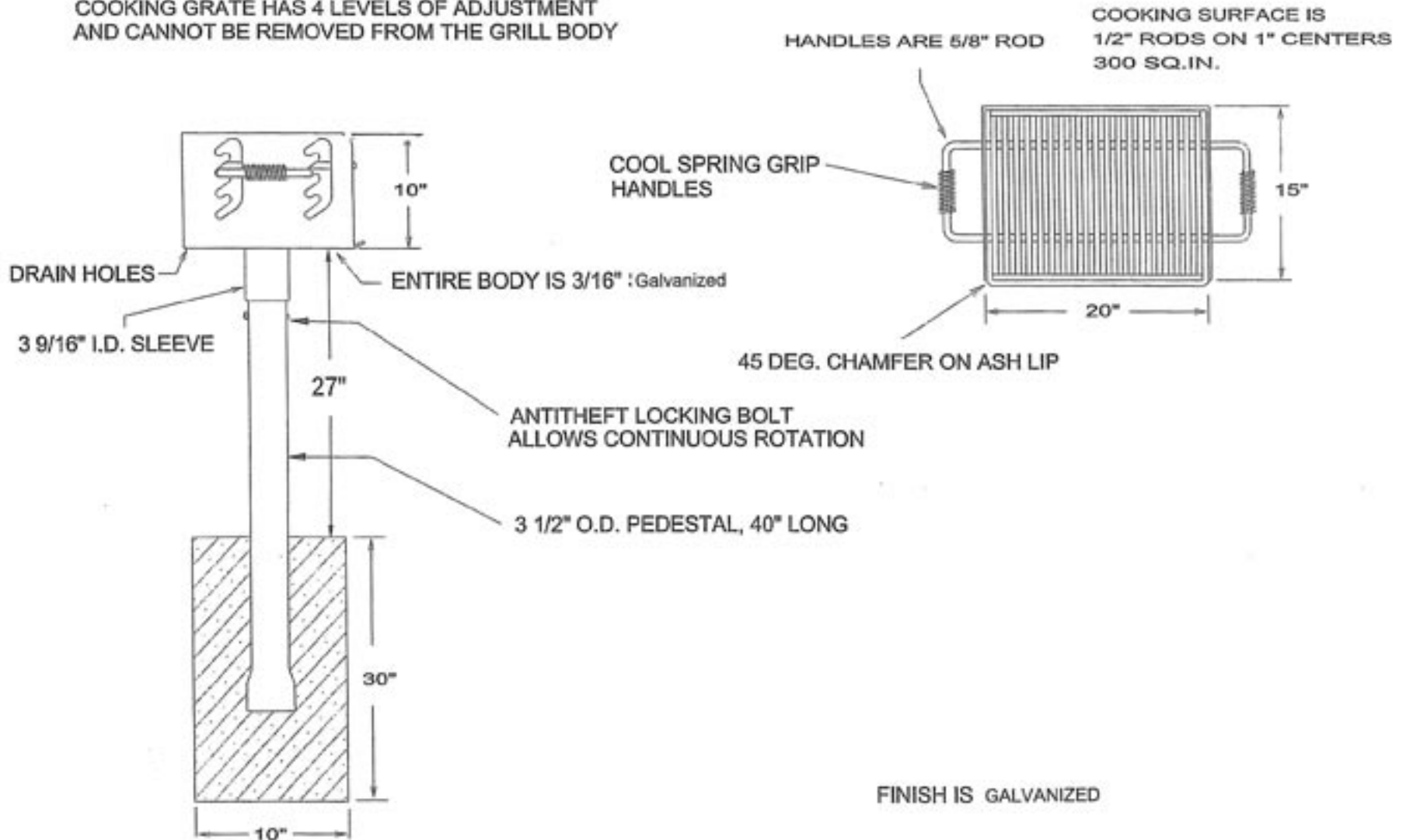


COOKING GRATE HAS 4 LEVELS OF ADJUSTMENT
 AND CANNOT BE REMOVED FROM THE GRILL BODY



NOTE: THE SIZE OF THE FOOTING
 IS ONLY A SUGGESTION
 YOUR LOCAL SOIL CONDITIONS
 SHOULD DETERMINE WHAT IS
 NECESSARY